

# OPEN FARM COMMUNITY



# EVENTS



## roots

At Open Farm Community, we want to connect people to the soil and seas in which their food grows. We do this by bringing together the farming community and creative chefs who create menus based on the best of what is available locally, with a selected few ethical imports and our very own farm and garden

## mindful

We respect our ingredients by continually experimenting with various ways to use them in the best way possible. With a compassionate spirit towards the environment, we pledge to serve only the freshest produce with niche-farming suppliers on your table.



# source

Can you spot our farmers?

We have the team from **Tiberias Farm** harvesting the fishes from sea, **Weeds & More** cultivating the seasonal vegetables, **Sustenir** for our salad bowl and we work closely with **Freedom Range** team to encourage the use of cage-free eggs in our menus.

From our very own Garden and Farm just next to the restaurant, our chefs pick a variety of seasonal herbs and cress like Moringa, Laksa Leaf, Blue Pea Flower and the Roselle Flower that we incorporate in our menu.

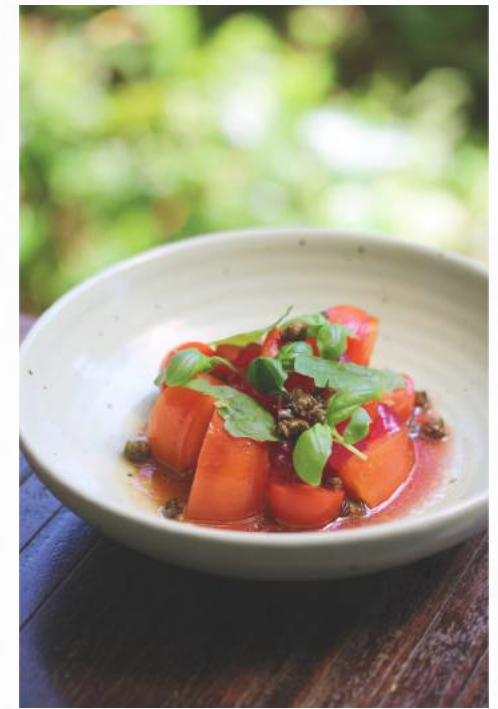


# food

We invite you to join us on a culinary journey that celebrates an exciting dining experience. Our farm-to-table offerings place the emphasis on freshness, organic produce and grass-fed animal proteins.

The aromatic herbs and blossoming flowers harvested from our very own farm and garden impart a touch of whimsy to each plate

O P E N  
F A R M  
C O M M  
U N I T Y







## main indoor

Air conditioned and with a seating capacity of 70 guests, the main indoor restaurant has hosted workshops with projector and screen set-up, media events with product displays and an intimate wedding reception

*\*A full buy-out of the entire restaurant is required for all weekend lunch event bookings*

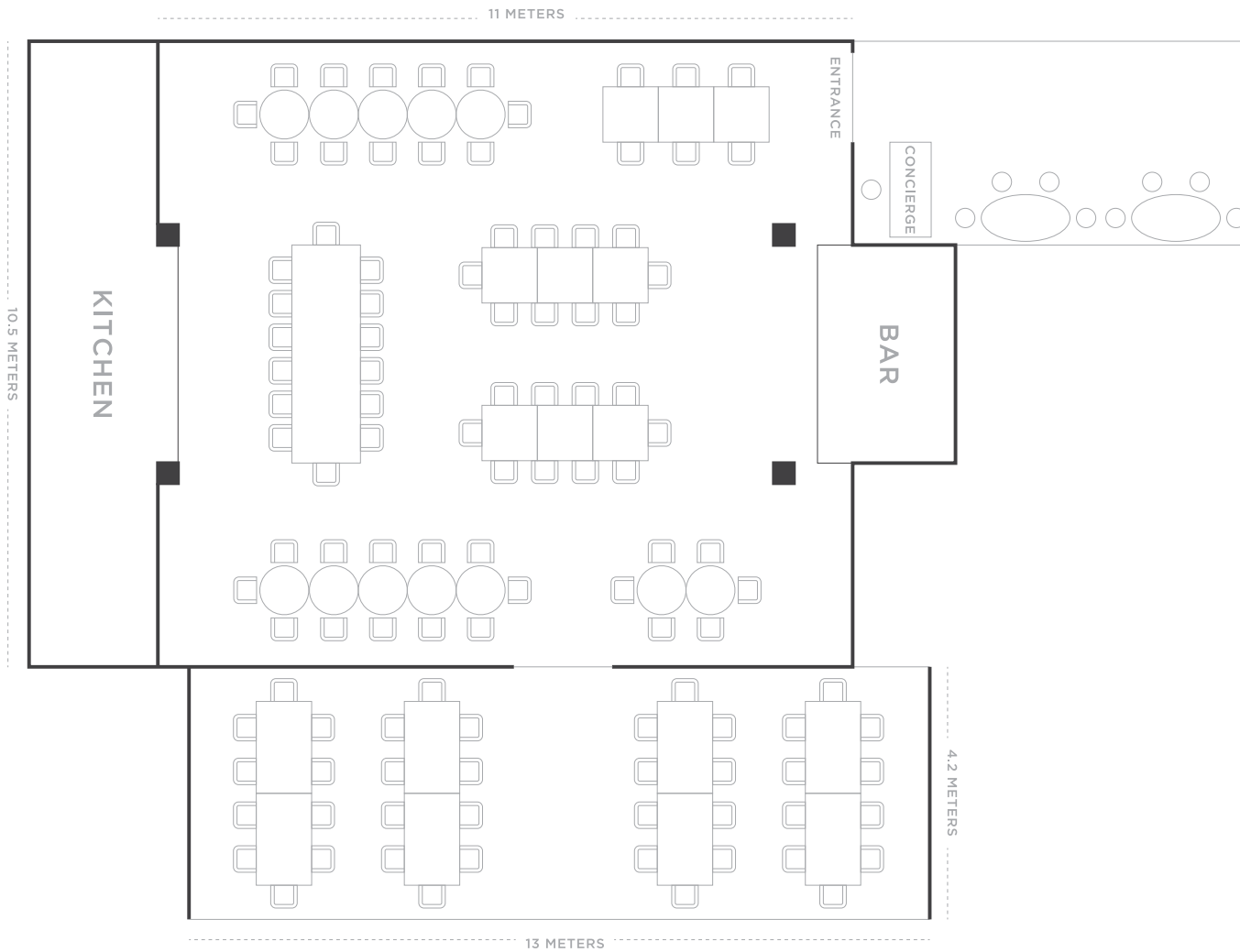




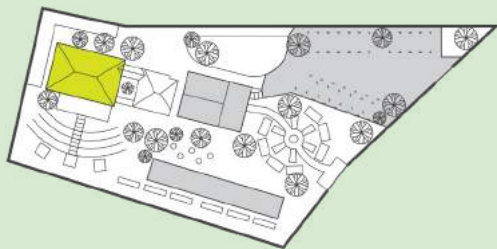
## outdoor deck

Surrounded by lush greenery of our landscaped garden, the Outdoor Deck is a sheltered outdoor dining space that is ideal for intimate group celebrations. It is equipped with air coolers and fans, and seats up to 40 guests

*\*A full buy-out of the entire restaurant is required for all weekend lunch event bookings*



# restaurant



With a combined indoor and outdoor area, we can graciously host up to 110 guests, ensuring an unforgettable experience for all.

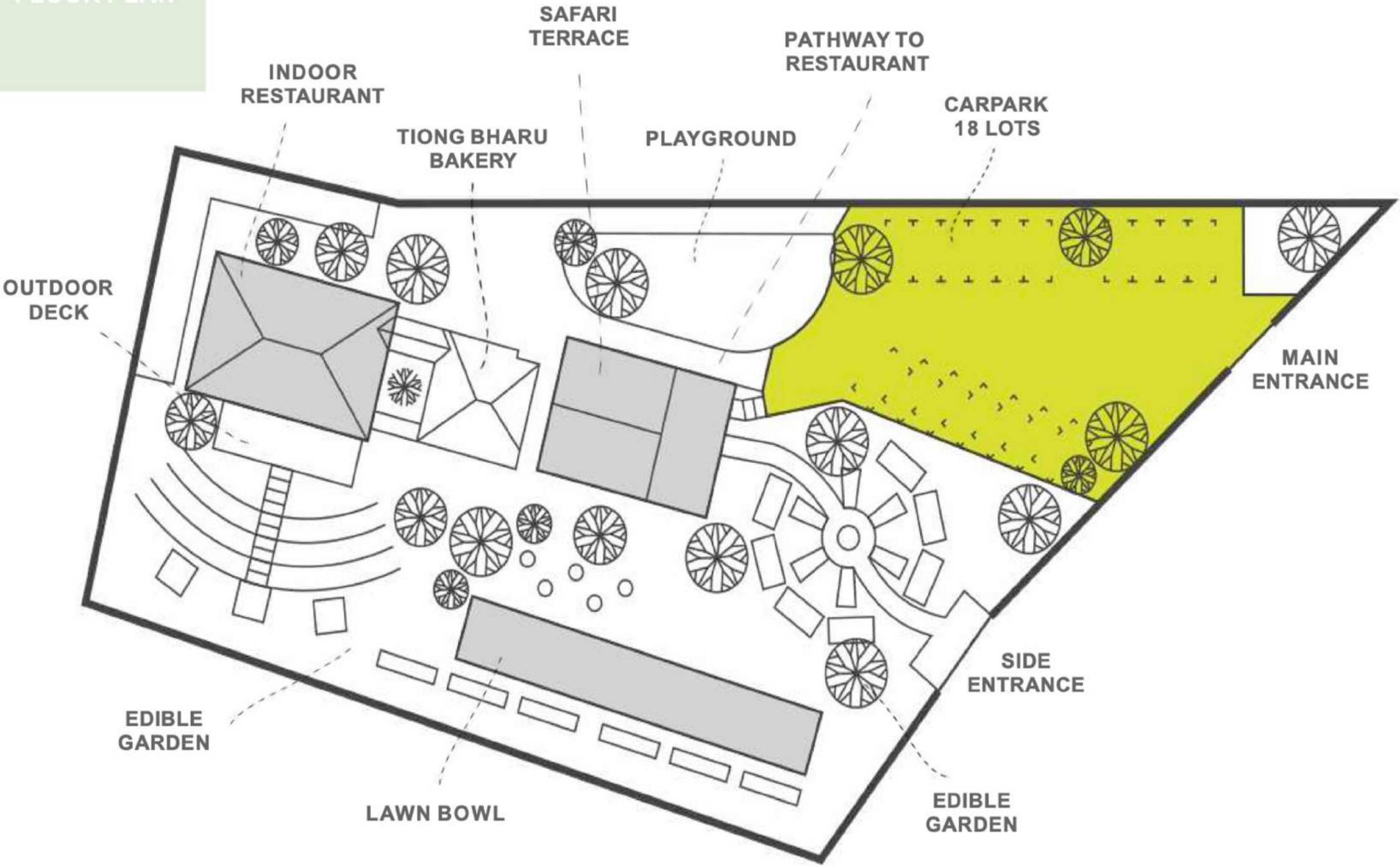
**MAIN INDOOR** | 70 seating

**OUTDOOR DECK** | 40 seating

O P E N  
F A R M  
C O M M  
U N I T Y



FLOOR PLAN



# events

## DINNER & DANCE

PRODUCT LAUNCH  
NETWORKING  
SOCIAL  
BIRTHDAYS

Cloudy Bay, Dyson, Facebook, Samsung, Google, Chanel, Credit Suisse, Jo Malone, The Body Shop, Allen & Overy, Ogilvy, Haagen Dazs, UBS, Deloitte, Singapore Tourism Board, Fancl, Canon, Lenova, Van Cleef and Arpels, Jurlique, ExxonMobil, BMW, Singapore Airlines, Watsons and CISCO are some of the companies that have hosted their dinner & dance, product launches, meetings and family day events on the premises.



photo credit: Cloudy Bay



# events

EVENTS  
PRODUCT/ BRAND LAUNCH  
NETWORKING  
SUPPORT  
BIRKHEADS

Cloudy Bay, Dyson, Facebook, Samsung, Google, Chanel, Credit Suisse, Jo Malone, The Body Shop, Allen & Overy, Ogilvy, Haagen Dazs, UBS, Deloitte, Singapore Tourism Board, Fancl, Canon, Lenova, Van Cleef and Arpels, Jurlique, ExxonMobil, BMW, Singapore Airlines, Watsons and CISCO are some of the companies that have hosted their dinner & dance, product launches, meetings and family day events on the premises.



# events



## NETWORKING

Cloudy Bay, Dyson, Facebook, Samsung, Google, Chanel, Credit Suisse, Jo Malone, The Body Shop, Allen & Overy, Ogilvy, Haagen Dazs, UBS, Deloitte, Singapore Tourism Board, Fancl, Canon, Lenova, Van Cleef and Arpels, Jurlique, ExxonMobil, BMW, Singapore Airlines, Watsons and CISCO are some of the companies that have hosted their dinner & dance, product launches, meetings and family day events on the premises.

*\*Event clients are required to arrange for logistics to remove existing furniture onsite and bring in own cocktail tables*



# events

EVENTS, DANCE  
PRODUCT LAUNCHES, MEETINGS, OFFICE  
NETWORKING

## BIRTHDAYS

Cloudy Bay, Dyson, Facebook, Samsung, Google, Chanel, Credit Suisse, Jo Malone, The Body Shop, Allen & Overy, Ogilvy, Haagen Dazs, UBS, Deloitte, Singapore Tourism Board, Fancl, Canon, Lenova, Van Cleef and Arpels, Jurlique, ExxonMobil, BMW, Singapore Airlines, Watsons and CISCO are some of the companies that have hosted their dinner & dance, product launches, meetings and family day events on the premises.



# fact sheet



## LOCATION

130E Minden Road Singapore 248819

## EVENT HOURS

Lunch: 12pm to 4pm (Mon to Fri) | 11am to 3pm (Sat & Sun)

Dinner: 6pm to 10pm

## HOW TO GET THERE

By Bus: Alight at Napier Rd, opp S'pore Botanic Gdns, bus stop 130011  
(7, 75, 77, 105, 106, 123, 174, 174e, NR8)

By Train: Nearest MRT - Napier

By Car: 18 parking lots available on site at 130E Minden Road

## CAPACITY (SEATED)

Main Indoor and Outdoor Deck: Up to 110 guests

Main Indoor: Up to 70 guests | Outdoor Deck: Up to 40 guests

## FACILITIES

Sound System

Wireless Handheld Microphones

Projector & Screen

Complimentary Parking (18 lots)

**contact us**

*Celebrate every joyous occasion in nature at  
Open Farm Community when you book your event space with us*

O P E N  
F A R M  
C O M M  
U N I T Y

**WEBSITE**

[www.openfarmcommunity.com](http://www.openfarmcommunity.com)

**PHONE**

+65 6471 0306

**EMAIL**

Events | [events@openfarmcommunity.com](mailto:events@openfarmcommunity.com)

General | [reservations@openfarmcommunity.com](mailto:reservations@openfarmcommunity.com)